

Thermally modified Decking Installation and Care

Coating or Sealers

Thermally modified lumber and decking can and will show small checking which is a natural occurrence with wood. Applying a coating/sealer will help minimize the checking along with achieving the desired look whether it be graying or keeping the rich color of Thermally modified decking. Thermally modified decking should be sealed on all six sides.

We recommend the following products and suggest you follow the instructions for applying the product provided by the manufacturer. Seal-Once is an excellent product to finish your decking both before and after installation.

Coating/sealing should be done regularly depending on the environment.

Thermally modified decking is not end trimmed during production. All ends need to be trimmed square and sealed. We recommend using Anchorseal® to seal each end.

Installation Options:

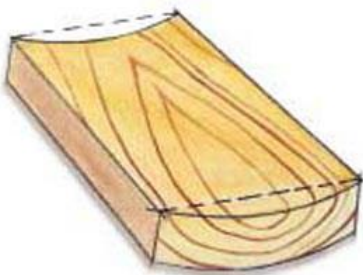
Traditional Face Screwing

We recommend using stainless steel screws and predrilling a hole 1/32" smaller in diameter than the screw. The screw head's taper must be counter sunk as well.

Recommended joist spacing is 16" OC.

Hidden Fasteners

We do not recommend grooving along the length of the boards. Over time, there could be an issue with structural integrity between joists which has been seen even with the hardest of decking products. Instead, we recommend using a biscuit joiner on each joist then using your preferred fastener.



Dried lumber will tend to "cup" forming a concavity opposite the "bark side" of a flat-sawn board. But even that golden rule is not always true, for sometimes the "cup" will form on the bark side

Storage:

Storing your Thermally modified decking prior to use is important. It is recommended that your decking is stored indoors and away from the elements.

If indoor storage is not possible, we recommend trimming the ends and sealing the end grain prior to storage. This will prevent splitting while storing outdoors.

A durable tarp should be used to completely cover the decking if stored outdoors to prevent discoloring and warping prior to installation.

Though Thermally modified decking has low moisture content, it is recommended that your decking be on site for a two-week acclimation period prior to installation.